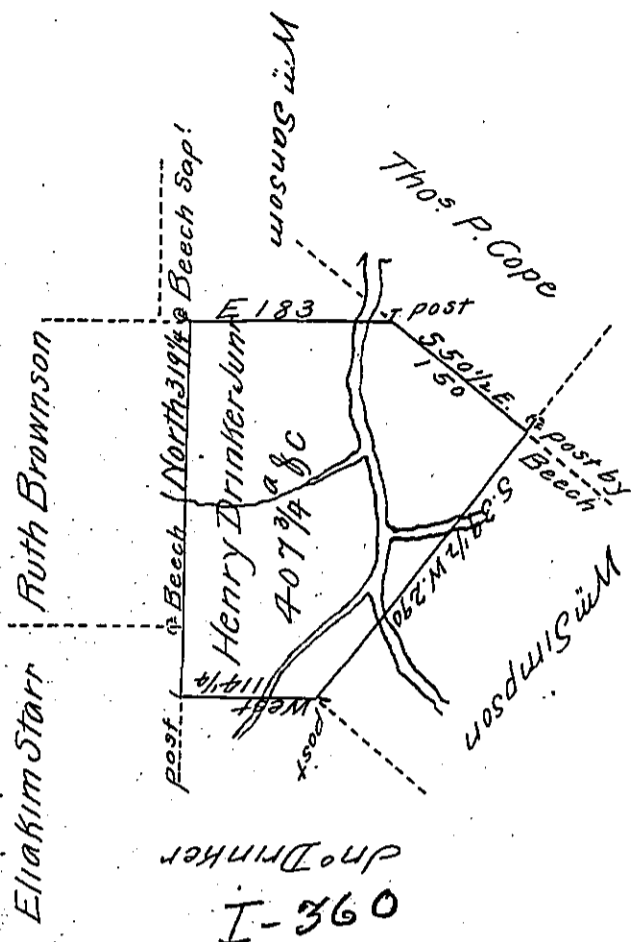


F-214



A Draft of a Tract of Land called _____ Situate on Pearing Brook
 Containing in Luzerne County containing Four Hundred & Seven & 3/4
 Acres & Allowance - Surveyed for Henry Drinker junior the Seventh
 Day of September 1793 by Virtue of a Warrant dated the 24th Day
 of June 1793

by Wm Gray D.S.

To Daniel Broadhead Esqr }
 Surveyor General }

IN TESTIMONY that the above is a copy of the original remaining on file in
 the Department of Internal Affairs of Pennsylvania, made
 conformably to an Act of Assembly approved the 16th day of
 February, 1833, I have hereunto set my Hand and caused
 the Seal of said Department to be affixed at Harrisburg,
 this Twenty third day of February 1911

Henry Howick

Secretary of Internal Affairs.